



*News and Services of the Hekman Library –June, 2006*

**June Bugs! June Beetles!**

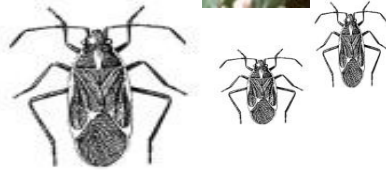


From **Encyclopædia Britannica**, any insect of the genus Phyllophaga, belonging to the widely distributed, plant-feeding subfamily Melolonthinae (family Scarabaeidae, order Coleoptera).

These red-brown beetles commonly appear in the Northern Hemisphere during warm spring evenings and are attracted to lights. They feed on foliage and flowers at night, sometimes causing considerable damage.



**YIKES!**



**Good News Film Fans!**

Hekman Library now subscribes to:

**Communication & Mass Media Complete**

The CMMC database offers cover-to-cover indexing and abstracts for over 370 journals and selected coverage of over 230 more. Over 240 of the journal titles are presented with full text articles! Articles date as far back as 1915 and continue to the present.



**Hekman Library**

**BOOKS...**

(by women named June)



**Elementary social studies: a practical guide**

by **June R. Chapin**, LB1584 .C47 2006

**Melloni's pocket medical dictionary**

illustrated by **June L. Melloni**, R121 .M54 2004

**Nationalism and French visual culture, 1870-1914**

edited by **June Hargrove**, N386 .U5 S78 V.68

**Travels of an American girl**

by **June Potter Durkee**, BV3703 .D87 2004

**Mosby's clinical nursing**

By **June M. Thompson**, RT41 .C65 2002

⚡ Christian Reformed Church ⚡

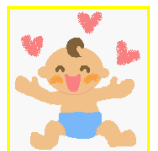
Synod 2006 - June 10-17 – Calvin College

As the summer season arrives the CRC in North America is gearing up for Synod. Synod is the annual meeting of the CRC and it takes place in the month of June. Last year 188 delegates attended from throughout the United States and Canada, with two ministers and two elders from each classis.



**Ask a Librarian Email Reference**

Summer is a great time to get important research done. If you have a question you would like to ask, try using our Ask-a-Librarian Email Reference Service.



It doesn't **bug** us, promise.

(not even in June)

