



**It's a Bird! It's a Plane!**

**It's Superman at 70!**

That's right; the super hero in blue tights turns 70 this month.

Check out these books:

**Superman at Fifty : the Persistence of a Legend**

Dooley, Dennis.  
 PN6728.S9 S87 1987

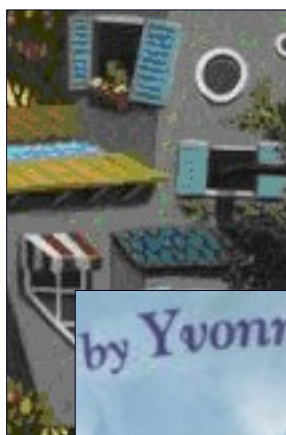
**Film and Comic Books**

Edited by Gordon, Jancovich, & McAllister  
 New Book Area

**The Art of the Comic Book : an Aesthetic History**

Harvey, Robert C.  
 PN6725 .H37 1996

**BRING OUT YOUR INNER CHILD WITH ONE OF OUR NEW CHILDREN'S LITERATURE BOOKS**



**Kaline Klattermaster's Tree House**

Kimmel, Haven  
 PZ7 .K56483 KAL 2008

**Juneteenth Jamboree**

Weatherford, Carole  
 Boston  
 PZ7 .W36 JU 2008

Spending time with children this summer? If you need some help

with educational ideas, consider the resources available at Educator's Reference Complete database.

Educator's Reference Complete indexes more than 1,100 periodicals as well as hundreds of full-text ERIC reports. The database is intended for the K-12 educator or administrator as well as education students, faculty, and researchers. It covers multiple levels of education from preschool to college.

**DO YOU HAVE A NEED FOR NATURE?**

Why not take a walk at the Ecosystem Preserve which consists of 90 acres of temperate deciduous forest, wetlands, and old fields on the east side of campus.

The award-winning Helen and Vincent Bunker Interpretive Center has a number of environmentally friendly features to check out during your visit. To help you learn more



about native plants of Michigan, check out the resources listed below:

Dirr's Hardy trees and shrubs : an illustrated encyclopedia

Dirr, Michael  
 SB435.5 .D556 1997 Reference

Landscaping with native plants of Michigan  
 Steiner, Lynn M.  
 SB439.24 .M5 S74 2006

Wildflowers of Michigan : a natural heritage worth protecting  
 Michigan. Dept. of Transportation. QK167 .W55 2004  
 Michigan Documents

Library Open Hours for June	
Monday – Thursday	8:00 am -- 9:00 pm
Friday	8:00 am -- 9:00 pm
Saturday	10:00 am – 5:00 pm